

2D miniLDV™

Integrated 2D miniature laser Doppler velocimeter

The 2D miniLDV incorporates two 1D probes with frequency shifting into a single unit with permanently co-located probe volumes. It is ideal for research and commercial applications. Setting up takes less than one hour because MSE's miniLDV probes require no alignment or calibration by the user.

ADVANTAGES OF THE 2D MINILDV:

- Self-contained
- Factory sealed
- Co-located probe volumes
- No alignment needed
- Calibration done at the factory
- Frequency shifting on both components
- No water cooling required
- Accurate measurement of fluids of varying temperature, pressure, and density
- Computer controlled 1, 2, and 3-axis traversing system
- 2D and 3D automated profile measurement
- Battery operated option
- Waterproof and temperature resistant housing option

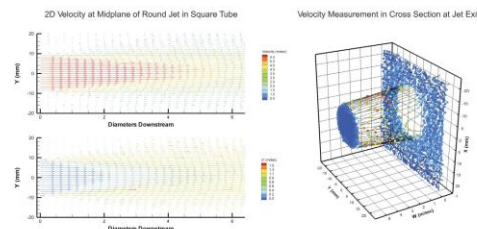
APPLICATIONS INCLUDE:

- Fluid mechanics, aerodynamics, turbulence, oceanography, and atmosphere studies
- Wind, water, oil tunnels and channels

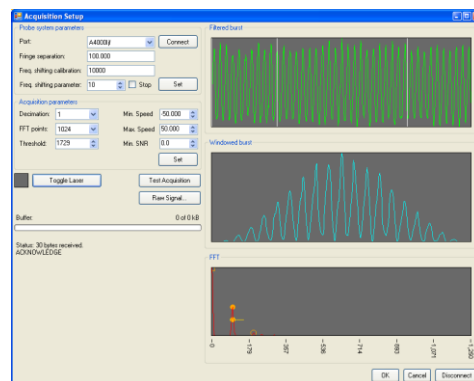


The 2D miniLDV System with 50 to 240 mm standoff is extremely compact, self contained, and permanently aligned; no calibration or alignment by the user is required. The probe contains two high power diode lasers, miniature beam shaping optics, and receiving and detection optics.

2D Flow Mapping with miniLDV™



The 2D miniLDV System includes the 2D miniLDV probe, dual Processing Engines, and a multidimensional version of MSE's Burst Processor Acquisition Manager software. With the optional computerized traverses, setting up a flow-mapping experiment for unattended acquisition is a matter of minutes, not hours.



The interface of the acquisition software complements the probe's ease of use.

MEASUREMENT SPECIFICATIONS	
Velocity range	-50 to 600 m/sec*
Repeatability	99.9%
Accuracy	99.7% or better

PROBE VOLUME	
PV dimensions (x by y by z)	Typical: 150 x 300 x 1200 μm**
Available standoff distances	50 mm, 100 mm, 150 mm and 240 mm

PROBE SPECIFICATIONS	
Probe weight	2 lbs (1kg)
Dimensions	51 x 76 x 150 mm 2 x 3 x 6 inches

LASER SPECIFICATIONS	
Laser power	2 x 130 mW
Wavelengths	658 and 785 nm
laser type	Class IIIb

OPERATING PARAMETERS	
Temperature	0 to 55°C
Pressure	Atmospheric
PC requirements	Laptop or PC

OPTIONAL FEATURES	
Water proof, high pressure, and high temperature housing	
Traversing stage for profile measurements	
1-D, 2-D, and 3-D traversing systems	

POWER SUPPLY	
12 VDC Universal	

* Velocity range is a function of the fringe separation and the dynamic range. Please specify your required velocity range.

** Probe volume dimension is a function of the standoff distance

One or more of the following U.S. Patents apply: No. 6,654,102, 6,580,503, 6,608,668, 6,717,172, 6,956,230

V201111



MEASUREMENT
SCIENCE
ENTERPRISE, INC.

123 W. Bellevue Dr., Suite 1
Pasadena, CA 91105
USA

Info@MeasurementSci.com
Phone: +1 (626) 577 0566
Fax: +1 (626) 577 0565